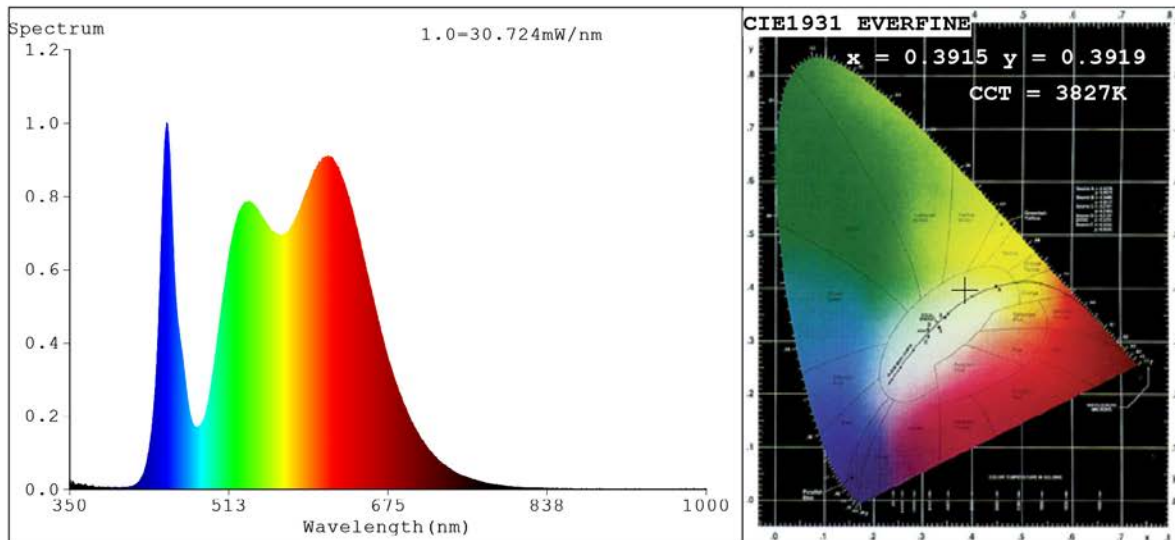


## Spectrum Test Report



### Color Parameters:

Chromaticity Coordinate:  $x=0.3915$   $y=0.3919$   $u'=0.2264$   $v'=0.5097$   
 $CCT=3827K$  ( $Duv=0.0038$ ) Dominant WL:  $\lambda_d = 578.0nm$  Purity=35.1%  
 Ratio: R=20.4% G=76.8% B=2.8%; Peak WL:  $\lambda_p = 449.2nm$  FWHM=17.5nm  
 Render Index:  $R_a=90.5$  CRI=85.6 TM30:  $R_f=90$   $R_g=101$   
 R1 =93 R2 =91 R3 =88 R4 =93 R5 =91 R6 =88 R7 =94  
 R8 =86 R9 =57 R10=77 R11=92 R12=64 R13=93 R14=92 R15=89

### Photo Parameters:

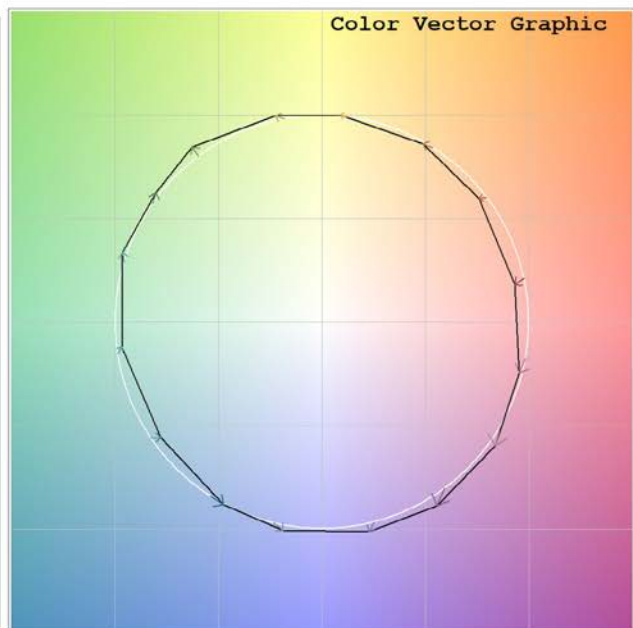
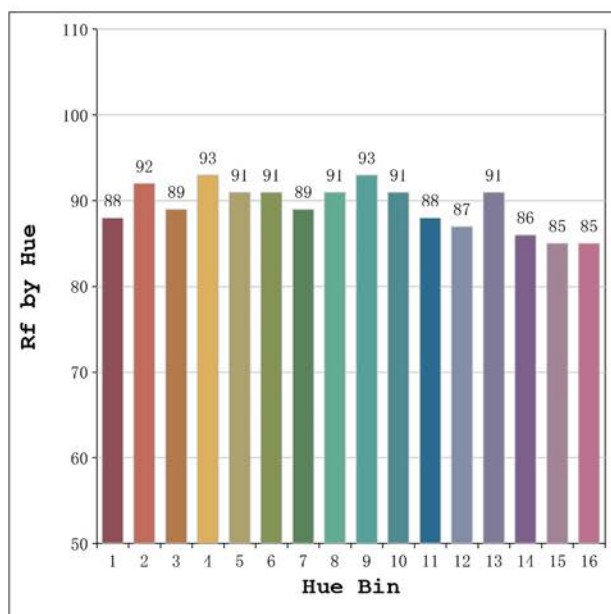
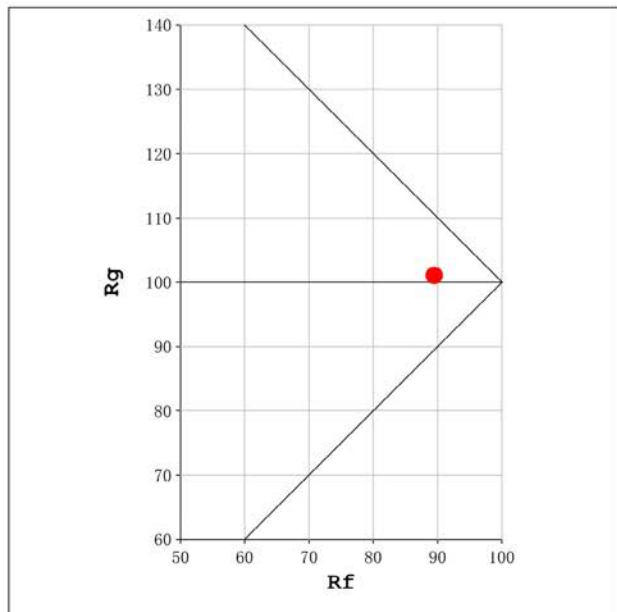
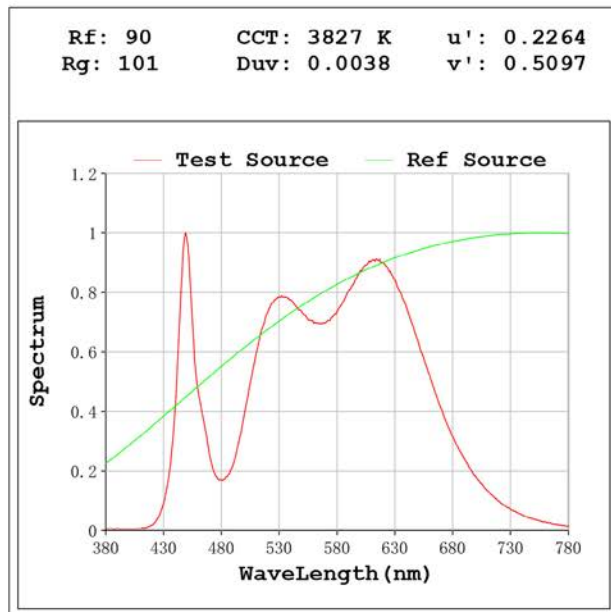
Flux = 1607 lm Eff. : 108.98 lm/W  $\Phi_e$  = 5.103 W

### Electrical parameters:

V = 23.998 V I = 0.6144 A P = 14.74 W PF = 1.000

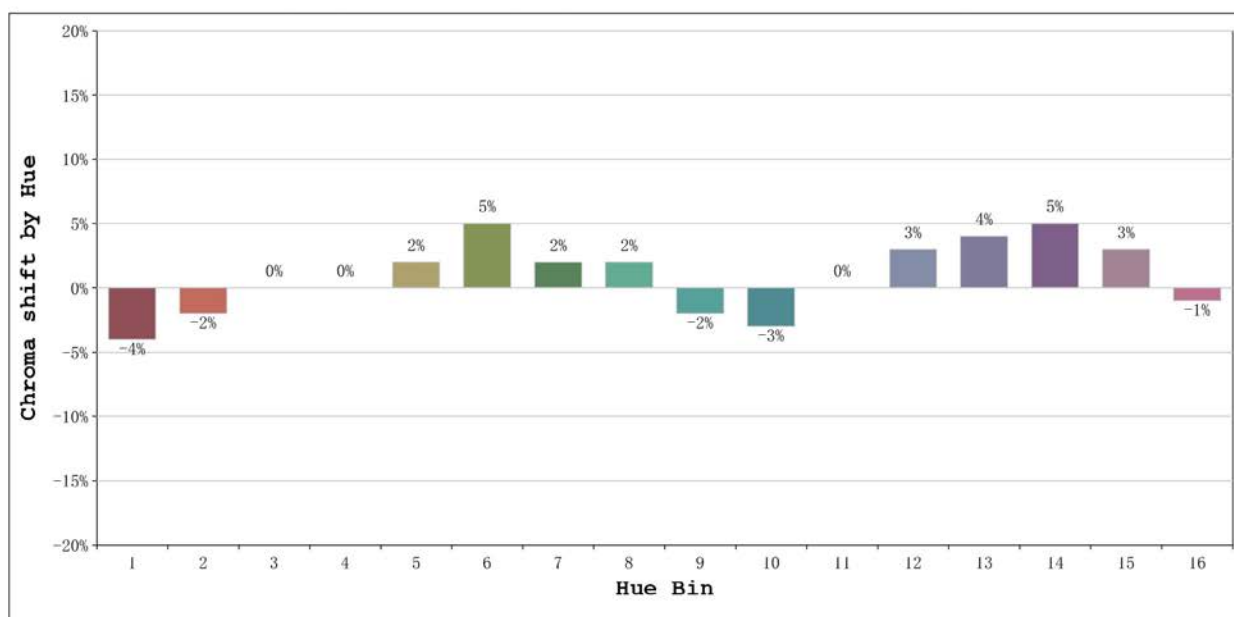
Status: Integral T = 667 ms  $I_p$  = 35932 (55%)

Model: Ecoled Élite 15 Gold 4000	Number: 31.178
Tester: Sergio Carneros	Date: 2025-02-12 16:00:49
Temperature: 20Deg	Humidity: 50%
Manufacturer: Luz Negra	Remarks: 100cm de tira flexible



Model:Ecoled Élite 15 Gold 4000  
 Tester:Sergio Carneros  
 Temperature:20Deg  
 Manufacturer:Luz Negra

Number: 31.178  
 Date:2025-02-12 16:00:49  
 Humidity:50%  
 Remarks:100cm de tira flexible



			Graphic shift(%)	
Hue Bin	Hue Angle	Rf	Chroma	Hue
1	0.0° - 22.5°	88	-4	-1
2	22.5° - 45.0°	92	-2	1
3	45.0° - 67.5°	89	0	5
4	67.5° - 90.0°	93	0	3
5	90.0° - 112.5°	91	2	4
6	112.5° - 135.0°	91	5	0
7	135.0° - 157.5°	89	2	-4
8	157.5° - 180.0°	91	2	-4
9	180.0° - 202.5°	93	-2	-2
10	202.5° - 225.0°	91	-3	2
11	225.0° - 247.5°	88	0	8
12	247.5° - 270.0°	87	3	5
13	270.0° - 292.5°	91	4	-2
14	292.5° - 315.0°	86	5	-7
15	315.0° - 337.5°	85	3	-8
16	337.5° - 360.0°	85	-1	-6

Model:Ecoled Élite 15 Gold 4000 Number: 31.178  
 Tester:Sergio Carneros Date:2025-02-12 16:00:49  
 Temperature:20Deg Humidity:50%  
 Manufacturer:Luz Negra Remarks:100cm de tira flexible